

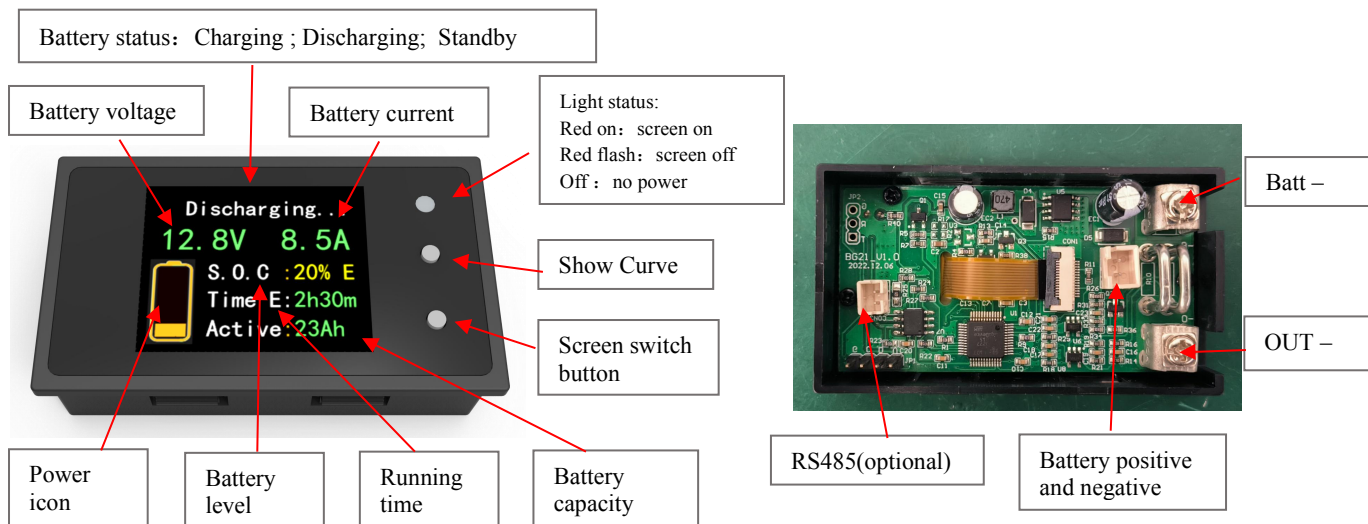
SHENZHEN GREEN DIGITAL POWER TECH CO., LTD

Tel:86-755-86582701 Fax:86-755-27464649 Email:sales@green-charger.com Http://www.green-charger.com

SPECIFICATION		PREPARE	CHECK	APPROVE
MODEL:	USED IN:			
ISSUE DATE :	2024/3/12 11:09:24			
COMMON/UNITE	DOC. NO:		REV.: 1.0	PAGE: 1 OF 1

BG21-[20,40] Battery Fuel Gauge

No.	Item	Unit	Specification	Remark
Input feature				
01	Rating Input Voltage	V	DC6~60V	This module can be selected in two states . The first is to specify the battery specification and write the battery capacity and type into the module memory. The second is not to specify the battery specification. After the user connects the battery and the module, press and hold the FN button, and then perform a complete charge and discharge cycle for the battery. Then press and hold the FN key again. BG21 will save the learned battery information, and call this battery parameter later.
02	Suitable battery type		7.2V~48V Li-ion battery 6.4V~48V LiFePO4 battery 7.2V~48V Ni-MH battery 7.2V~48V Ni-Cd battery 12V~48V VRLA battery	
03	Max. Charge/Discharge Current permitted. & typical series impedance.	A	20A (impedance: 5mR) 40A (impedance: 2.5mR)	
04	Rating Consumed power	mA	Screen on: 20mA, screen off:6mA	
05	OFF Status leakage current	mA	0mA	

Top View and Illustration

06	Voltage accuracy	%	+1.5%	
07	current accuracy	%	+5%	
08	Capacity accuracy	%	+5%	

Environmental conditions and shape parameters

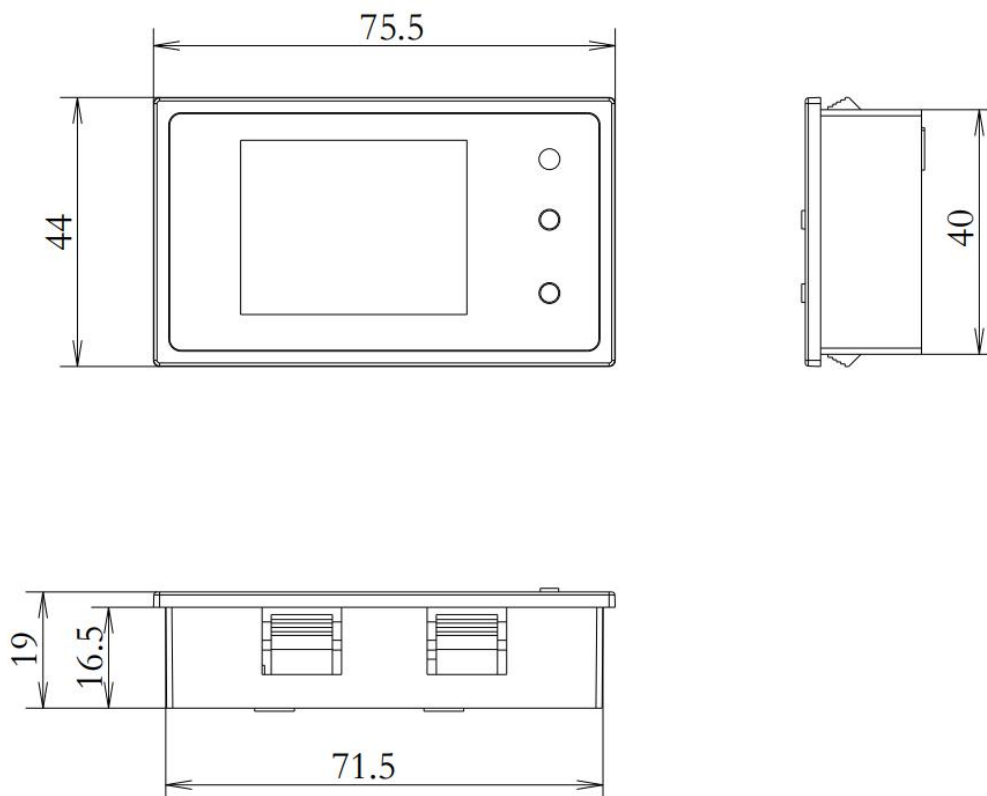
09	Operating temperature	°C	-10 ~ +50	
10	Operating humidity	%RH	< +90	
11	storage temperature	°C	-40 ~ +70	
12	Storage humidity	%RH	0 ~ +95	
13	Anti-vibration level	-	5MM/50HZ/600S	
23	weight	g	50	
24	size	mm	75*44*19 (length*width*height)	

SHENZHEN GREEN DIGITAL POWER TECH CO., LTD

Tel:86-755-86582701 Fax:86-755-27464649 Email:sales@green-charger.com Http://www.green-charger.com

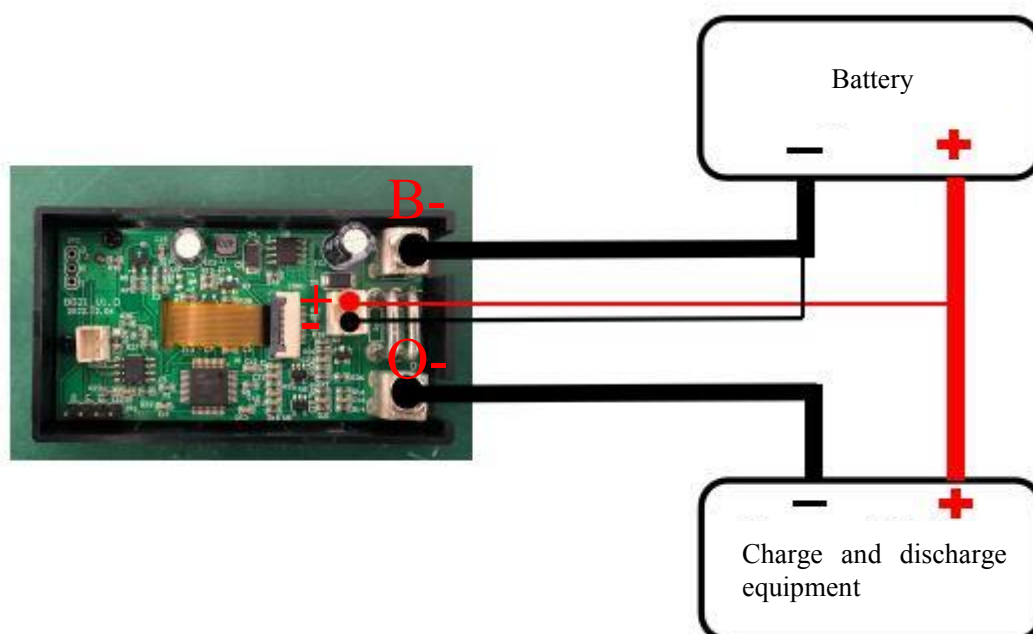
SPECIFICATION		PREPARE	CHECK	APPROVE
MODEL:	USED IN:			
ISSUE DATE :	2024/3/12 11:09:24			
COMMON/UNITE	DOC. NO:		REV.: 1.0	PAGE: 2 OF 1

Dimensional drawing



SHENZHEN GREEN DIGITAL POWER TECH CO., LTD				
Tel:86-755-86582701 Fax:86-755-27464649 Email:sales@green-charger.com Http://www.green-charger.com				
SPECIFICATION		PREPARE	CHECK	APPROVE
MODEL:	USED IN:			
ISSUE DATE :	2024/3/12 11:09:24			
COMMON/UNITE	DOC. NO:		REV.: 1.0	PAGE: 3 OF 1

1.Wires connection diagram



2.Calibrate

After connecting the Wires, do not charge and discharge first, at this time, check whether the current display of the display screen is $\leq 0.1A$. If it is greater than or equal to 0.1A, calibration is required.

The calibration procedure is as follows: long press the "ON" key and do not release. After about 3 seconds, the status indicator (red light) will blink. After the status indicator has blinked, click the "FN" key (do not press long) to complete the calibration.

3. Initial battery information

For the battery used for the first time, the user needs to connect the battery and the module, long press the FN button, and then do a complete charge and discharge cycle of the battery.

The specific procedure is as follows: Press and hold FN for about 2 seconds. If Test is displayed on the right of SOC, the battery information starts to be input. In this case, you only need to

To do a complete charge and discharge cycle of the battery, BG21 will save the learned battery information, and later use will call this battery parameter.

4. View the curve

During the charge and discharge process, you can click FN to view the charge and discharge curve, and then click FN to return to the main page.